

APPROVED BY THE WATERVILLE

CHAIRMAN

June 27, 1977 DATE

*James C. Rowe*  
*Joseph C. Ellis*  
*John A. Rowe*

LEGEND:

- PIN SET
- PIN FOUND
- E OF PAVEMENT
- HYDRANT
- ANGLE POINT
- MAN HOLES
- TRANSFORMER
- LIGHT POLES
- OF 50' EASEMENT
- R/W AREA



CITY OF WATERVILLE

S 57°54'30" E

498.2'

89.7'

REFER TO PLAN 1953

FOR THE LOCATION OF THE DEEDS FOR DEED REFERENCE  
THIS PLAN IS A DIVISION OF LOTS ONE AND TWO OF THE  
PLAN IN PLAN BOOK 42 PAGE 5

MITCHELL

TV TOWER

DRAINAGE WAY

PARKING

PARKING

PARKING AREA

PLAY AREA

TENNIS COURT

POOL

CLUB HOUSE

PARKING

PARKING

18.3 ACRES

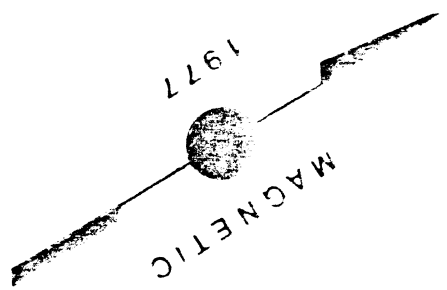
16.3 ACRES

CRESTWOOD PARK

A PLAN OF  
FOR  
HAMILTON INVESTMENT TRUST  
IN  
WATERVILLE MAINE  
BY  
ROWE & ELLIS  
JUNE 27 1977

*Joseph C. Rowe*

*Map # 7015*  
*Supplemental Registry*



SEWER LINE

WEST RIVER ROAD

S 31°53'30" W 587.5'

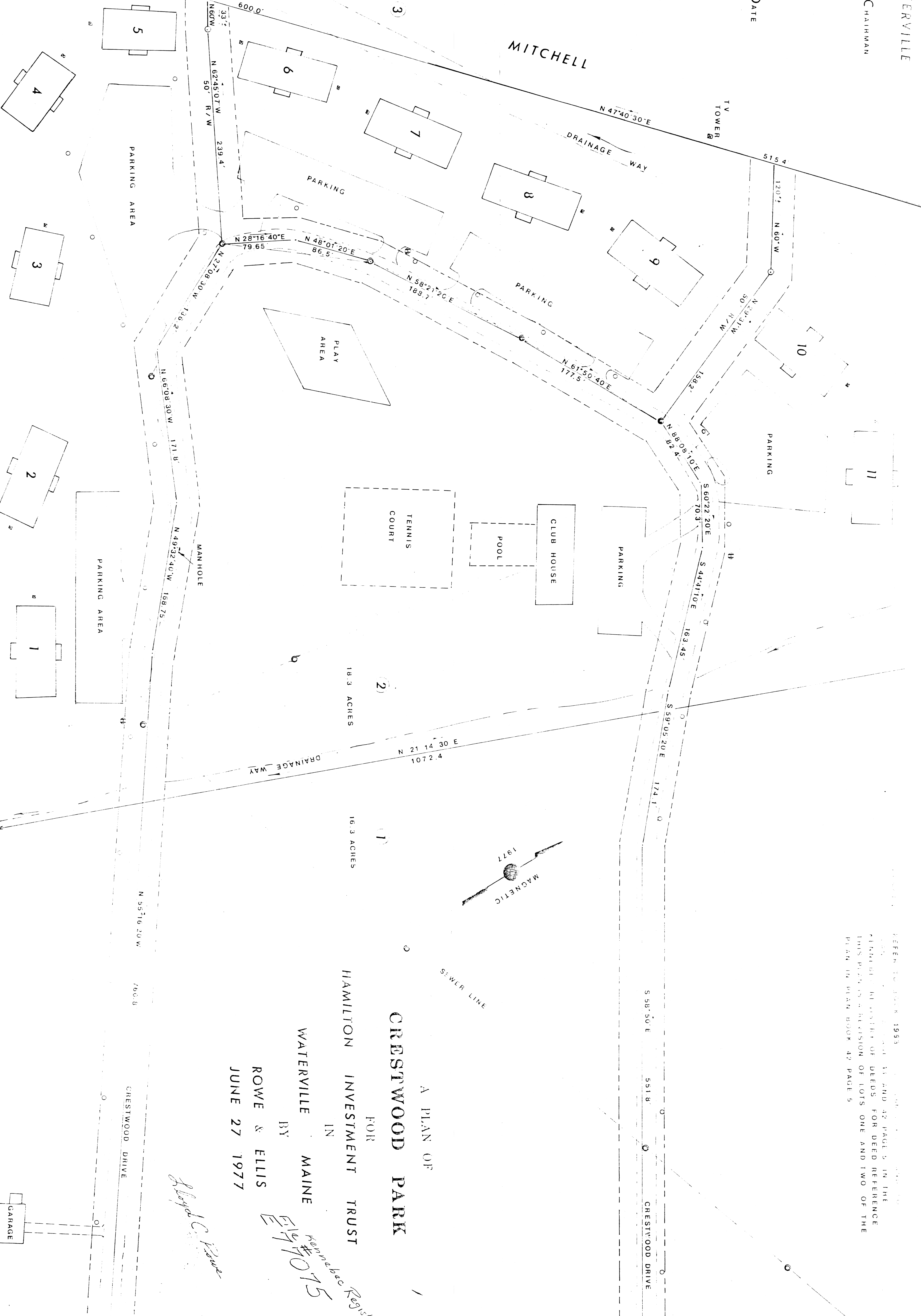
S 42°12' W 336.6'

GARAGE

CRESTWOOD DRIVE

CRESTWOOD DRIVE

PELOTTE



**M22**  
*Rowe & Ellis*

CRESTWOOD PARK (By: Rowe & Ellis-1977)