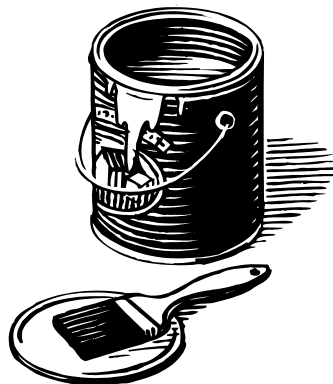


Community Contact Information

- ✓ **BELGRADE:** Town office 495-2258
- ✓ **BENTON:** Town Office, 453-7191
M, T, W, F: 9-4; Th 11-6
- ✓ **CHINA:** Transfer station, Elwin Higgins, 445-3033
- ✓ **CLINTON:** Transfer Station, Gerald Howard, 426-8187
- ✓ **FAIRFIELD:** Town Office, 453-7346, (Tracey Stevens) M-F 8-4pm
- ✓ **OAKLAND:** Town Office, 465-7357, Transfer Station, Call John 465-4732.
- ✓ **SIDNEY:** Town Office, 547-3340
- ✓ **WATERVILLE:** Public works, 680-4744 8AM-4PM
- ✓ **WINSLOW:** Town Office, 872-2776. Ask for Paul to call you.
- ✓ **VASSALBORO:** George Hamer Transfer Station 923-3051

ALL HAZARDOUS MATERIALS ARE DISPOSED OF BY OUR LICENSED VENDOR



Household Hazardous Waste

Drop Off Day

Date:
Saturday, October 15th

Time:
9:00 a.m. to 12:00 p.m.

Drop Off Location:
Winslow Public Works
135 Halifax St.

Who:
Residents of Belgrade, Benton, China, Clinton, Fairfield, Oakland, Sidney, Waterville, Winslow, Vassalboro. If your community is not listed above check with your Town Office.

PRE-REGISTRATION IS REQUIRED TO PARTICIPATE

This program was developed by:



ITEMS TO BRING:

- ✓ TV's & Computers! NEW
- ✓ Oil/Alkyd – Based Paints (No latex)
- ✓ Unwanted/outdated medications (New!)
- ✓ Stains, Thinners, Paint Strippers
- ✓ Solvents (e.g. Acetone), Varnishes, Lacquers
- ✓ Adhesives, rubber cement
- ✓ Waste Fuels, (Kerosene, Gasoline and Diesel)
- ✓ Engine Degreaser, Brake Fluid
- ✓ Antifreeze
- ✓ Oil – Waste Oil, Hydraulic Oil, etc.
- ✓ Dry Cell Batteries, Ni-Cad Batteries, Rechargeable Batteries, Hearing Aids (Button Batteries), Car Batteries
- ✓ Poisons, Insecticides, Weed Killers, Pesticides, Moth Balls.
- ✓ Hobby Supplies, Artist Supplies
- ✓ Photography Chemicals, Chem. Sets
- ✓ Nail Polish Remover
- ✓ Cleaners (oven, ammonia-based), Drain Openers, Sport Removers.
- ✓ Swimming Pool Chemicals
- ✓ Aerosol Cans (No Empty Containers)
- ✓ Driveway Sealers (Oil base only)
- ✓ Old Fire Extinguishers (Carbon Tetrachloride only)
- ✓ Compressed Gas Cylinders
- ✓ Other Items you're not sure about call **Ross Nason at 453-4258, ext 220.**

WHAT NOT TO BRING:

- ✓ **Asbestos:** Call ME Dept of Environmental Protection at 1-800-452-1942.
- ✓ **Commercial or Industrial Waste:** Call ME Dept. of Environmental Protection at 1-800-452-1942 or EPI at 1-877-846-0447.
- ✓ **Infectious & Biological Waste:** Call your local Hospital for instruction on how to dispose.
- ✓ **Latex (Water Based) paint:** Dry the materials by opening the lid or placing kitty litter in the container, then dispose with regular trash once it is completely dry.
- ✓ **Fluorescent lights, CFL's PCB ballasts, thermometers & thermostat's.** These items can be recycled through your local transfer station or Pine Tree Waste.

How much is a unit?

A unit is 5 gallons or 20 pounds of hazardous waste. For example: 1 unit could be a 5 gallon bucket of rubber cement or a collection of several different smaller containers of chemicals, such as a gallon of paint thinner, a small bag of dry pesticide and a few old aerosol cans.

This program would not have been possible without the support of KVCOG, and Environmental Projects Inc. of Auburn, Maine, and our host community, the City of Waterville.

Children should NEVER handle Hazardous Materials.

PRE-REGISTRATION INFORMATION

Please contact the representatives for your community. They will talk to you about:

- ✓ The items you want to bring to the collection day to make sure they are acceptable items.
- ✓ Schedule a time for you to come to the collection day event.
- ✓ Fill out a form for the items you will be bringing, collect fee (if applicable) and issue you a sticker that will allow you into the collection day event. Please note some communities are charging a fee. Check the other side of this flyer to see amount of fee, if any.
- ✓ Provide alternative disposal or recycling options for items that cannot be taken to the collection event.

How to Safely Transport Items

- ✓ All items brought to the collection must be in sealed containers.
- ✓ Tighten caps and lids, leaving materials in the original labeled container when possible.
- ✓ Pack containers in sturdy, upright boxes and pad with newspapers. Sort and pack separately: paints, pesticides, household cleaners.
- ✓ **NEVER MIX CHEMICALS.**
- ✓ Place materials in vehicle, preferably in the trunk. Prevent box from tipping over in the car.
- ✓ Go directly to the collection site.

NEVER SMOKE while handling Hazardous Materials.